

RCA

DRD485RG



DIGITAL

Digital technology at the center
of your home entertainment system

Digital quality picture and
digital audio performance capability¹


Convenience features
to simplify and enhance your
viewing experience

RCA

Changing Entertainment. Again.
www.rca.com



DIRECTV Receiver

- Component Output (Y, Pr, Pb) **◀NEW▶**
- Master Touch® Universal IR/UHF Remote²
- Dolby Digital³ Sound Capability*
 - Coaxial Output **◀NEW▶**
 - Optical Output
- One-Button Record
- Advanced Program Guide™ **◀NEW▶**
-  DIRECTV INTERACTIVE™ Powered by Wink Communications®⁴
- Interactive Channel Banner features:
 - Viewing Suggestions **◀NEW▶**
 - Caller ID Display Capability⁵
 - Guardian™
 - Scout™
 - AlphaSort™
- Accelerated 32-Bit Processor
- Two Sets of Audio/Video Output Jacks

*Requires Dolby Digital³ Receiver

DRD485RG

Picture

- **Digital Quality Picture Capability¹**
Digital compression technology provides sharper, clearer images for a sensational entertainment experience.

Sound

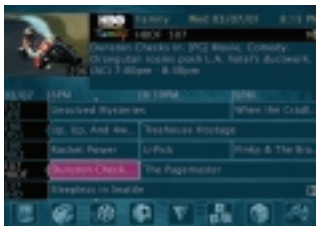
- **Digital Audio Performance Capability²**
Allows consumer to enjoy DIRECTV[®] programming with digital audio performance.
- **Dolby Digital³ Sound Capability**
Dolby Digital³ (when available) provides six independent soundtrack channels through the optical and coaxial output jacks. When connected to an optional, compatible six-channel amplifier/receiver and speakers, these connections provide Dolby Digital³ Surround Sound.

Convenience

- **Accelerated 32-Bit Processor**
The accelerated performance allows immediate access to all the new interactive features.
- **On-Screen Program Guides**
 - Advanced Program Guide™ **<NEW>**
The new guide stores up to 7 days of programming information. Search the ENTIRE channel guide while viewing an active channel in the picture window. Provides channel and program title information for seven different channels covering up to a two-hour time window. Arrows help indicate programs starting before or ending after the current time shown on the grid.



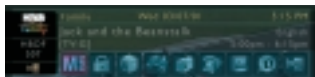
- Information Guide
Lists five different channels of programming at a glance. Details on the current highlighted program are displayed in a banner at the top of the screen with an active channel in the picture window. Program information changes automatically as the consumer navigates through the guide and highlights different programs.



- **DIRECTV INTERACTIVE™ powered by Wink Communications®⁴**
An interactive television service that lets you use the enclosed remote control to access up-to-the-minute news, sports, financial information, weather, get program trivia, respond to free offers and shop, all while you watch TV.



- **Interactive Channel Banner**
The translucent, see-through Interactive Channel Banner gives direct access to the key features of the DIRECTV System.



- Viewing Suggestions **<NEW>**
This intelligent feature presents a list of recommended programs based on the Topic and Theme category of previously viewed programs by the consumer. The consumer has the ability to view the suggestions, disable or enable the Viewing Suggestion feature's learning capability, and to edit the Topic and Theme categories manually.



- On-Screen Caller ID Display Capability⁵
View and store Caller ID information provided by your local phone company. With this feature you can view time and date of each incoming call, log up to 20 incoming calls sequentially and know who called while you were away.
- The Guardian™
With this feature, parents have the ability to lock out specific channels and set rating and spending limits. They will be able to set specific viewing times for both the weekdays and the weekends.
- Scout™
The Scout feature searches the entire program guide to find matches to eight key words or phrases that you enter. Great for keeping track of your favorite movies, sports teams, actors and actresses!
- AlphaSort™
The AlphaSort feature allows you to sort the current guide alphabetically, starting with any letter you choose. Go directly to any listed show with the push of one button or you can save directly as a Scout™.

- **16-Event Scheduler**
Allows you the ability to program your receiver to turn on, tune to a specific channel, and turn off at a pre-set time.
- **One-Button Record**
Records any program being viewed with the touch of one button. The receiver sends infrared commands to the VCR⁶ to execute the recordings at the proper time.
- **Software Upgradeable Via Satellite**
Your digital satellite receiver is able to receive upgrades or modifications to some of its features and functions. Please consult the Upgrade Menu to find a schedule of upgrades or modifications planned by DIRECTV. The upgrade feature is enhanced by RSA™ Secure⁷.



The "RSA Secure" logo ensures only authorized upgrades are delivered to your RCA digital satellite receiver.

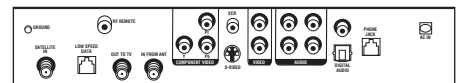
Remote

- ▶ **Master Touch® Universal IR/UHF Remote CRK76SH⁸**
Provides complete satellite system operation plus primary function control of most brands of remote controllable TVs, VCRs, and cable boxes, and works from any room in the home with built-in UHF capability.

DIRECTV Receiver⁸

- **Dimensions:** 12¼" W, 2" H, 10¼" D

Connections



- ▶ Component Output (Y, Pr, Pb) **<NEW>**
- ▶ Aux RF Remote Antenna Input
- ▶ Dolby Digital³ Coaxial Output **<NEW>**
- Dolby Digital³ Optical Output
- S-Video Output
- Two Sets of Audio/Video Output Jacks
- VCR Control Output
- Satellite In Connector
- RF In/Out Connectors with Menu Selectable CH3/4 Switch
- Phone Jack Connector
- Low Speed Data Port

Shipping Weight

- **Approx. 8 lbs.**

Plus

- **Limited Warranty**
See RCA dealer or visit www.rca.com for complete details.



©2001 Thomson multimedia Inc.

Form S-DRD485RG
Trademark(s) ® Registered Marca(s) Registrada(s)
Photos and features subject to change without notice.
Illustration of product finish may vary from actual color.
Printed in the U.S.A. 3/01

PC14567
GAC38930

1 Quality of picture and sound are dependent upon the audio system, cables, and/or television used by the consumer.

2 Controls the RCA®-DIRECTV™ System plus most brands of remote controllable TVs, VCRs and cable boxes. Feature compatibility varies by brand and model.

3 Dolby Digital and the double-D symbol are trademarks of Dolby Laboratories Licensing Corporation.

4 DIRECTV™ programming subscription required.

5 To use this feature, you must have your receiver directly plugged into a telephone outlet (not a wireless phone jack) and you must subscribe to a Caller ID or similar caller identification service.

6 Controls most brands of VCRs.

7 RSA Secure and the RSA Secure logo are trademarks of RSA Data Security, Inc.

8 With this receiver and the proper satellite dish antenna, you may be able to subscribe to local channels from DIRECTV in certain markets. Additional equipment may be required in some areas. Check with your retailer or visit DIRECTV.com for information on availability of local channels from DIRECTV in your area.

Residents of Alaska: The RCA®-DIRECTV™ Receiver requires a larger dish antenna (not included) to receive DIRECTV™ programming. Signal reliability and performance will be susceptible to degradation especially during adverse weather conditions.

Check your local dealer or installer for information on larger antennas which may be compatible with the RCA®-DIRECTV™ Receiver.

DIRECTV, the Cyclone Design logo, Advanced Program Guide, and DIRECTV INTERACTIVE are trademarks of DIRECTV, Inc., a unit of Hughes Electronics Corp., and are used with permission.

Wink and the Wink Logo are trademarks of Wink Communications, Inc.



Changing Entertainment. Again.

www.rca.com